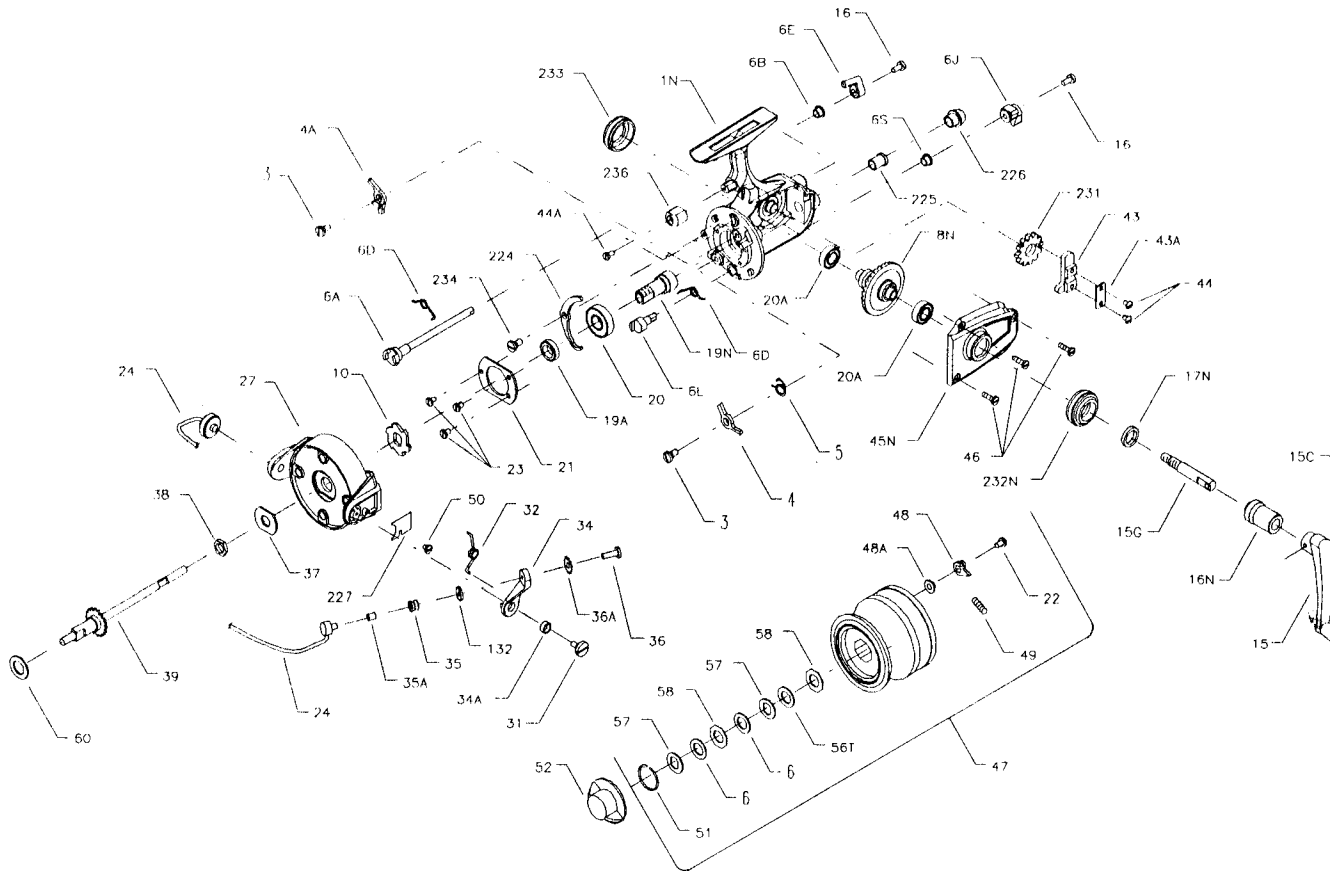




PARTS AND PRICE LIST FOR MODEL 6500SS



Key No.	Part No.	Description	Price	Key No.	Part No.	Description	Price
1N	001N6500	Housing	\$16.00	35	035 750	Line Roller	\$3.70
3	003 750	Dog Screw (2 req.)	.80	35A	035A704	Line Roller Bushing	.45
4	004 650	Dog	.90	36	036 750	Bail Stud Screw	.65
4A	004A650	Silent Dog	1.50	36A	036A750	Lock Washer	.45
5	005 704	Click Dog Spring	.50	37	037 650	Rotor Washer	.80
6	006 155	Drag Washer-HT100 (2 req.)	.60	38	038 710	Rotor Nut	.50
6A	006A650	Upper Eccentric	2.50	39	039 650	Spool Shaft	6.95
6B	006B750	Upper Eccentric Liner	.45	43	043 750	Crosswind Block	2.05
6D	006D710	Eccentric Spring (2 req.)	.45	43A	043A750	Crosswind Block Plate	.50
6E	006E750	Anti-Reverse Lever	1.00	44	044 750	Crosswind Block Screw (3 req.)	.45
6J	006J750	Silent Dog Lever	1.25	44A	044 750	Trip Bumper Screw	.45
6L	006L650	Silent Eccentric	2.00	45N	045N6500	Housing Cover	8.00
6S	006B700Z	Silent Eccentric Liner	.45	46	046 750	Housing Cover Screw (3 req.)	.45
8N	008N6500	Main Gear	12.35	47	047 6500	Spool (Complete)	24.00
10	010 650	Ratchet	1.50	48	048 750	Click Tongue	.50
15	015 650	Handle	12.50	48A	048A750	Click Tongue Washer	.45
15C	015C650	Pivot Screw	.55	49	049 710	Click Tongue Spring	.50
15G	015G6500	Handle Pivot	2.45	50	050 712	Bail Spring Cover Screw	.50
16	016 910	Eccentric Screw (2 req.)	.50	51	051 650	Retaining Ring	.50
16N	016N6500	Handle Collar	1.80	52	052 650	Drag Knob	5.25
17N	017N6500	Seal Washer	.55	56T	056T650	Drag Washer (Teflon®)	.60
19A	019A650	Pinion Spacer	.80	57	057 650	Drag Washer (Keyed) (2 req.)	.50
19N	019N6500	Pinion	7.30	58	058 650	Drag Washer (Octagon) (2 req.)	.50
20	020 704	Ball Bearing	14.00	60	060 750	Thrust Washer	.80
20A	020 6500	Ball Bearing (2 req.)	12.00	132	132 750	Roller Washer	.90
21	021 750	Bearing Cover	1.50	224	224 650	Transfer Lever	1.80
22	022 750	Spool Click Screw	.45	225	225 750	Crosswind Shaft Bushing	1.50
23	023 750	Bearing Cover Screw (3 req.)	.45	226	226 7500	Bushing Cap	1.15
24	024 650	Bail Wire	9.35	227	227 750	Bail Spring Cover	.70
27	027 650	Rotor	12.75	231	231 650	Crosswind Gear	3.70
31	031 750	Bail Arm Screw	1.00	232N	232N6500	Bearing Cover (Open)	2.45
32	032 750	Bail Arm Spring	.90	233	233 650	Bearing Cover (Closed)	3.70
34	034 750	Bail Arm	3.05	234	234 750	Transfer Lever Screw	.45
34A	034A750	Bail Arm Bushing	.45	236	236 750	Trip Bumper	.55
				*	*300 6500	Power Handle	16.00